

**B. Tech Degree V Semester (Supplementary) Examination
July 2009**

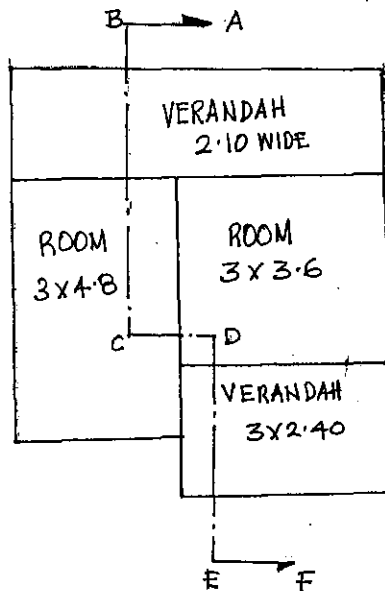
**CE 506 (A) CIVIL ENGINEERING DRAWING
(2002 Scheme)**

Time : 3 Hours

Maximum Marks : 100

(Assume any missing data suitably)

- I. Draw the elevation of a steel roof truss suitable for a span of 8 meters. (30)
- OR**
- II. What are the different types of stair cases? Draw their line sketches. (30)
- III. The line sketch of an office building is shown. Prepare the detailed drawing of
- (i) Plan (20)
 - (ii) Section at ABCDEF (30)
 - (iii) Front elevation (20)



Line sketch (Not to scale)
All dimensions are in meters.

